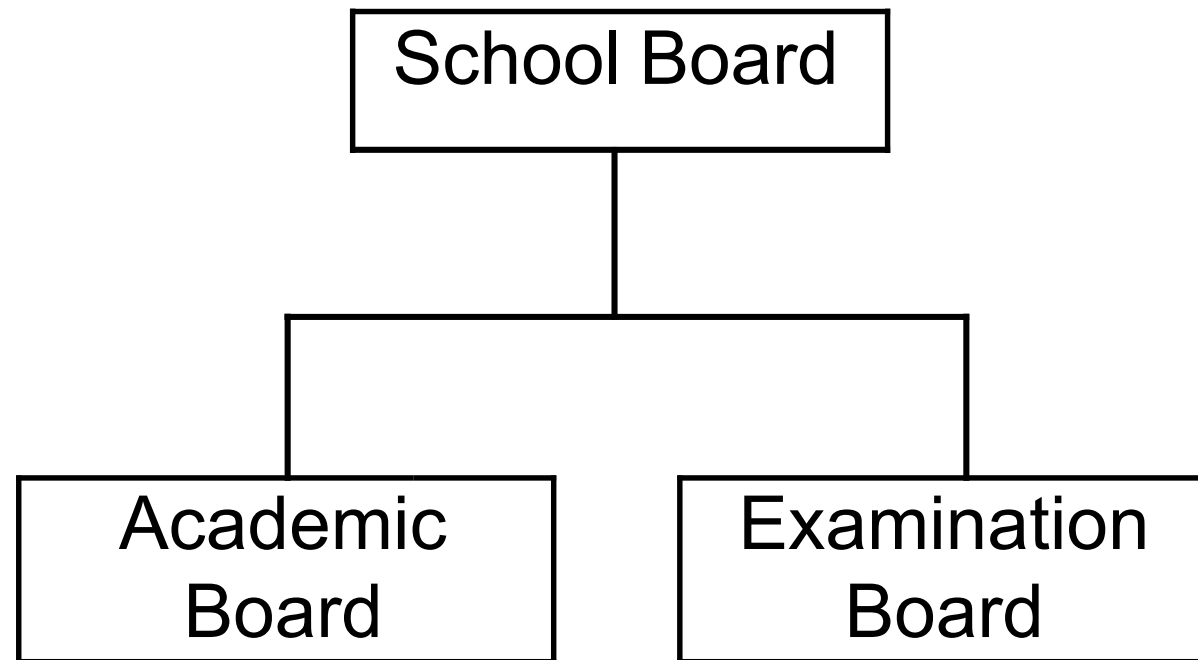


Waseda Shibuya Senior High School in Singapore Organizational Structure



School Manager: Mr. Niiho Akihiko (Secretary General and School Board Member)

School Board Members
(as of 18/12/2023)

Members of Academic Board and Examination Board
(as of 18/12/2023)

PhD. GOTO Haruhiko (Chairman)	Senior Executive Vice President, Waseda University. Professor, School of Creative Science and Engineering, Waseda University Managing Director of Waseda Shibuya Senior High School in Singapore	PhD GOTO Haruhiko	School Board Member
PhD.Takashi ASO	Vice President for International Public Relations, Equality and Diversity Promotion Professor ,Faculty of International Research and Education, Waseda University	PhD.Takashi ASO	School Board Member
Mr.Shogo KANEKO	Manager, Financial Affairs Division of Waseda University	Mr.Shogo KANEKO	School Board Member
Mr.Tetsuo TAMURA	Chairman, Shibuya Kyoiku Gakuen Shibuya Junior & Senior High School Shibuya Makuhari Junior & Senior High School	Mr.Tetsuo TAMURA	School Board Member
Mr.ToshiakiTAMURA	Principal, Shibuya Makuhari Junior & Senior High School	Mr.ToshiakiTAMURA	School Board Member
PhD. Hatsue SHINOHARA	Principal, Waseda Shibuya Senior High School in Singapore Professor, Graduate School of Asia-Pacific Studies of Waseda University	PhD. Hatsue SHINOHARA	School Board Member
Ms Itsuko TAKAGIWA	Vice Principal, Waseda Shibuya Senior High School in Singapore Principal, Shibuya Junior & Senior High School	Ms Itsuko TAKAGIWA	School Board Member
Mr.Akihiko NIIHO	Director of Administration, Secretary-General of Waseda Shibuya Senior High School in Singapore Research Manager, International Affairs and Academic Affairs Division, Waseda University	Mr.Akihiko NIIHO	School Board Member
Mr.Tetsunori KUWAHARA	Director, Head of Teacher of Waseda Shibuya Senior High School in Singapore	Mr.Tetsunori KUWAHARA	School Board Member
Mr.Nemoto Susumu	Administrative Director , Academic Affairs Division of Waseda University	Mr.Nemoto Susumu	School Board Member

